

East Troy Community School District
2040 Beulah Avenue
East Troy, WI 53120

NONPROFIT
ORGANIZATION
U.S. POSTAGE
PAID
MILWAUKEE, WI
PERMIT NO. 0188

VOTE | APRIL 7, 2020

All registered voters who live within the East Troy Community School District's attendance area may vote on the referendum question at their regular polling places. Polls will be open from 7 a.m. to 8 p.m. on Tuesday, April 7, 2020. For voting information, visit <https://myvote.wi.gov>.

Registered Wisconsin voters may request an absentee ballot. To register to vote, update your voting information or request an absentee ballot, visit www.myvote.wi.gov. Completed absentee ballots must be delivered no later than 8 p.m. on Election Day. The U.S. Postal Service recommends absentee ballots be mailed one week before Election Day to arrive in time.

ADDRESSING FINANCIAL NEEDS in the East Troy Schools

Learn more about the district's proposed plan

The East Troy Community School District faces significant challenges, including those related to operations, safety and maintenance. Current projections indicate future deficits averaging \$470,000 per year for the next five years due to expense increases outpacing revenues from the state of Wisconsin.

ETCSD also must address a number of large-scale maintenance needs. These upgrades, if budgeted for within the operational funds for education, would require significant cuts to programs and services.

On **Tuesday, April 7**, district residents will vote on a referendum that, if approved, would allow the district to address its most urgent financial and maintenance needs. We invite you to learn more about ETCSD's needs and the solution that will be presented to voters.

Learn more at www.bit.ly/easttroyreferendum



BALLOT QUESTION

Shall the East Troy Community School District, Walworth and Waukesha Counties, Wisconsin be authorized to exceed the revenue limit specified in Section 121.91, Wisconsin Statutes, by \$1,600,000 per year beginning with the 2020-2021 school year and ending with the 2024-2025 school year, for non-recurring purposes consisting of maintenance, operation expenses, safety and security, and facilities improvements?

REFERENDUM INFORMATION

CURRENT & PROJECTED BUDGET DEFICITS

In Wisconsin, the amount of money a school district receives is restricted by a state-imposed revenue limit, also known as a revenue cap. At East Troy, our revenue limit has always been lower than most other districts. This is due to the fact that when revenue limits were created by the state in 1993, low-spending, frugal districts like ours were locked into a very low limit. In fact, only 15% of Wisconsin districts had a lower revenue limit than ours in 1993.

Current projections indicate future deficits averaging \$470,000 per year for the next five years. In the course of the past 13 years, our district has implemented \$7.8 million in budget-balancing efforts.

MAINTENANCE NEEDS BEYOND OPERATIONAL BUDGETS

Based on the revenue the district receives under the current state-imposed revenue limit, there is no additional money available for the identified large-scale maintenance projects. Saving for the maintenance projects under our current revenue limit would require further reductions to programs and services provided to students.

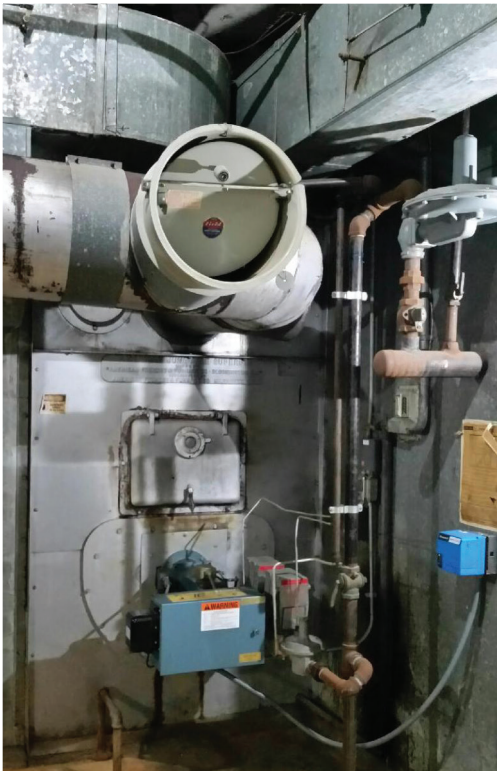
PROPERTY TAX IMPACT

If approved, the referendum would have an estimated property tax impact of \$98 per year on a home with an assessed value of \$100,000.



81%
of Wisconsin
Public School Districts
have passed
Operational Referenda
since 1993

Source: WI Department of Public Instruction



INFORMATIONAL SESSIONS

We invite you to attend these upcoming informational sessions.

Monday, March 9
6:00 p.m.
East Troy Brewery

Wednesday, March 18
5:15-5:45 p.m.
High School Library

Wednesday, March 25
6:00 p.m.
Ale Station



facebook.com/EastTroyCommunitySchoolDistrict



twitter.com/ETCSD